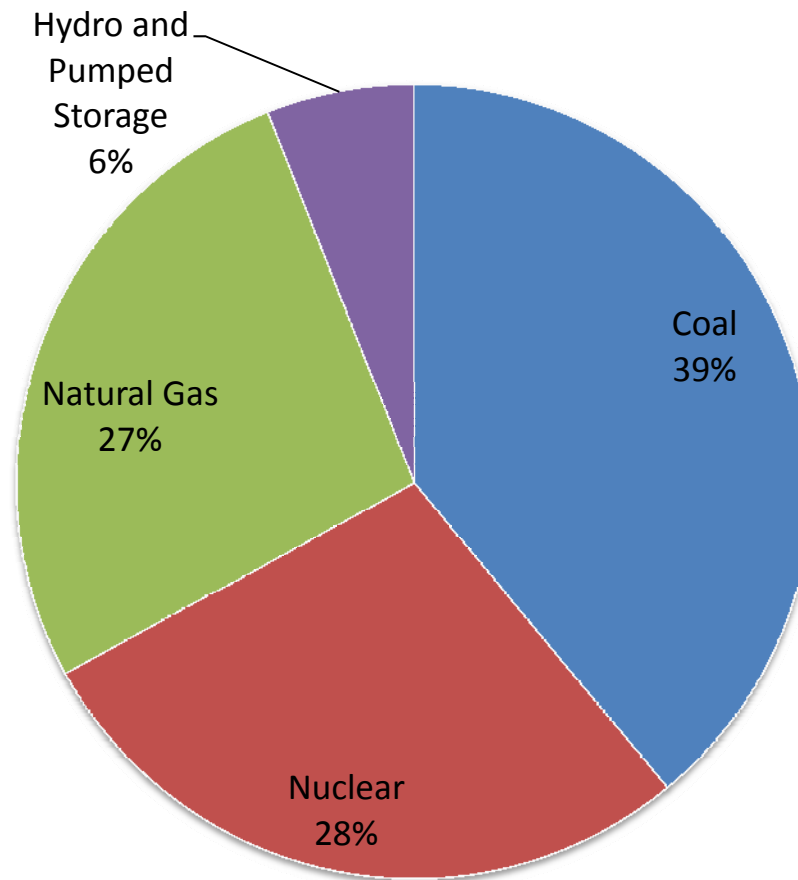


Governor's Office of Energy Policy

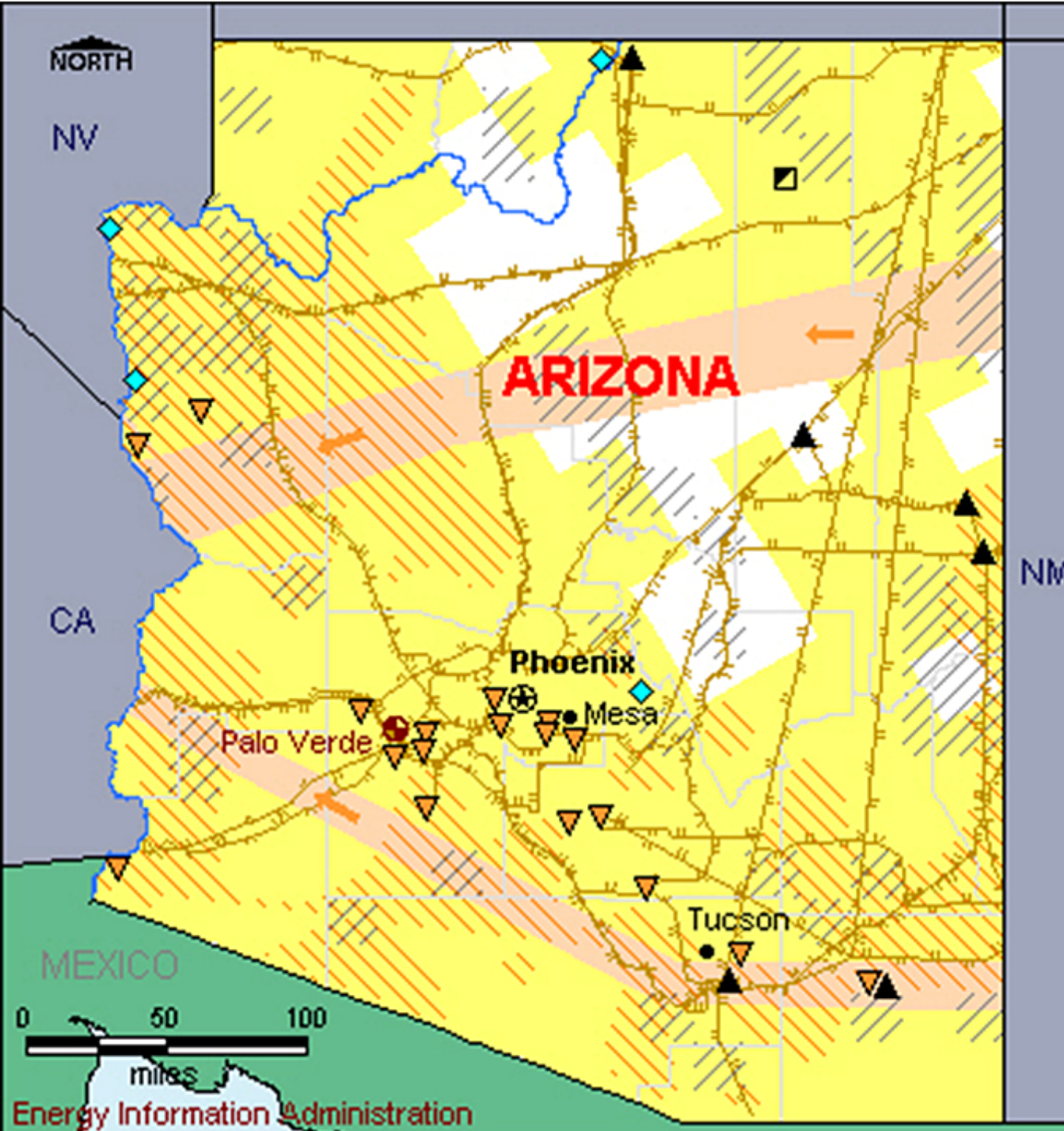


Meeting the Energy Needs of the 21st Century
June 7, 2012

Annual Net Generation by Energy Sources



Source: 2010 Energy Information Administration



MAP LEGEND

- ▣ Coal Mine, Surface
- ▣ Coal Mine, Underground
- ★ Natural Gas Hub
- ▣ Petroleum Refinery
- ◆ Oil Import Site
- ⚓ Oil Seaport
- Electricity Transmission Line (≥ 345 kV)
- Orange shaded area: Natural Gas Flow (1 mile band width = 100 million cubic feet/day)
- ▨ Oil and Gas Active Leases

MAJOR ELECTRIC POWER PLANTS (≥ 100 MW)

- | | |
|-----------------|-------------------|
| ▲ Coal | ● Petroleum |
| ⊙ Geothermal | ☀ Solar |
| ◆ Hydroelectric | ✕ Wind |
| ▼ Natural Gas | 🌳 Wood |
| ⊛ Nuclear | ● Other Renewable |

RENEWABLE ENERGY POTENTIAL

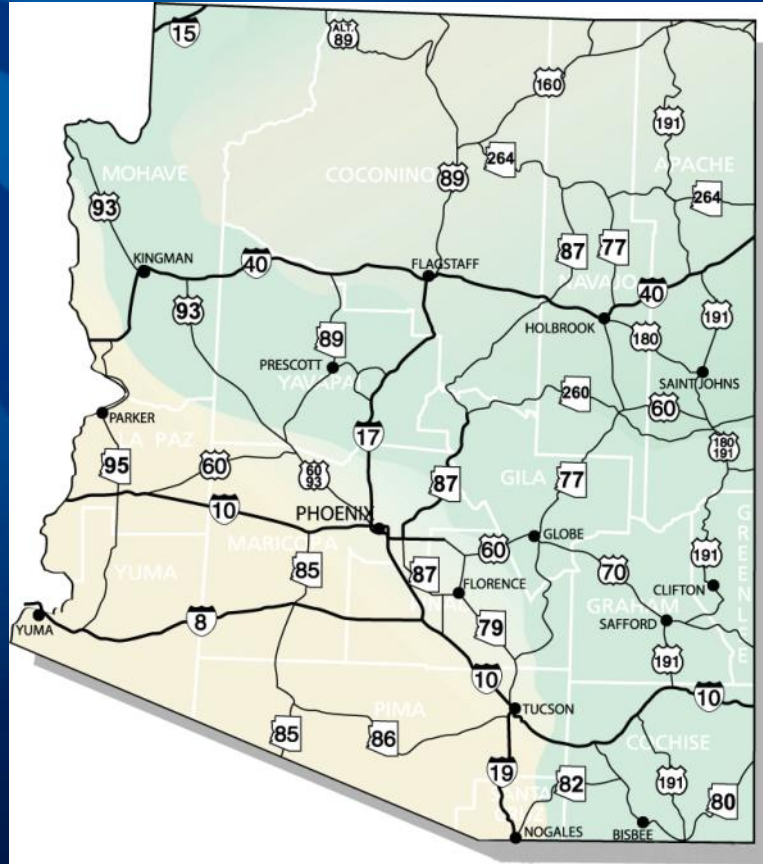
- | | |
|------------------------------------------------------|-----------------------------------------------------------------|
| ▨ Biomass (≥ 50 tons/sq km/yr) | Yellow shaded area: Solar (≥ 6.0 kWh/m ² /day) |
| ▨ Geothermal (≥ 80 milliwatts/m ²) | ▨ Wind (≥ 3 Power Class) |

🖱 Mouse over symbols for more details.

Arizona – Solar Capital of the World

- 2011 - solar installations grew by 333%
- 3rd in U.S.
- 2012 estimates Arizona may rank 2nd

Source: Solar Energy Industries Association



- Since 2010, 12 companies have located or expanded
- 1,937+ in jobs
- \$1.049 billion of capital investment

**Source: Arizona
Commerce Authority**

Jobs are key

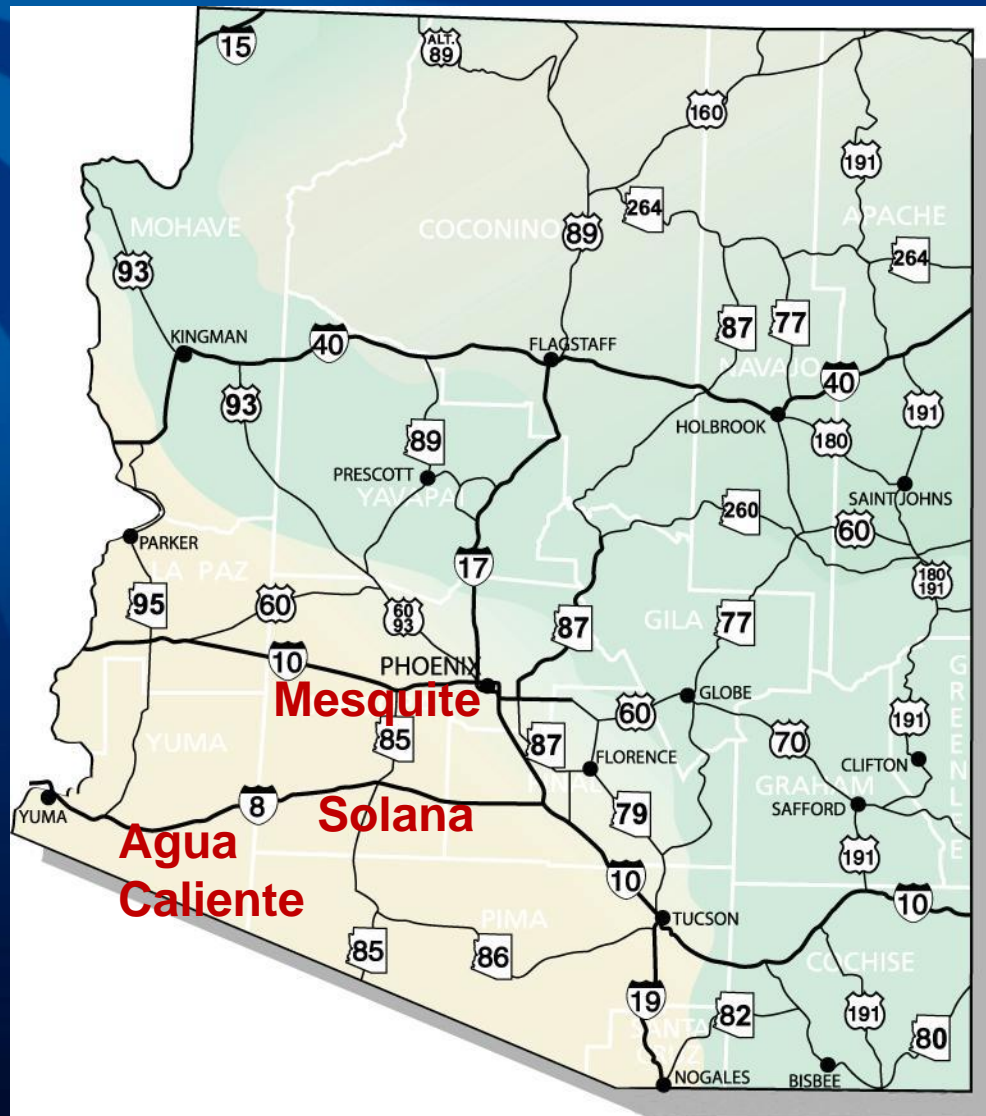


Photo courtesy of Abengoa

- In 2011, Arizona ranked 3rd in solar jobs
- 4,786 solar jobs
- Ranked behind only California and Colorado

Source: Solar Foundation's 2011 National Solar Jobs Census

Utility Scale Projects



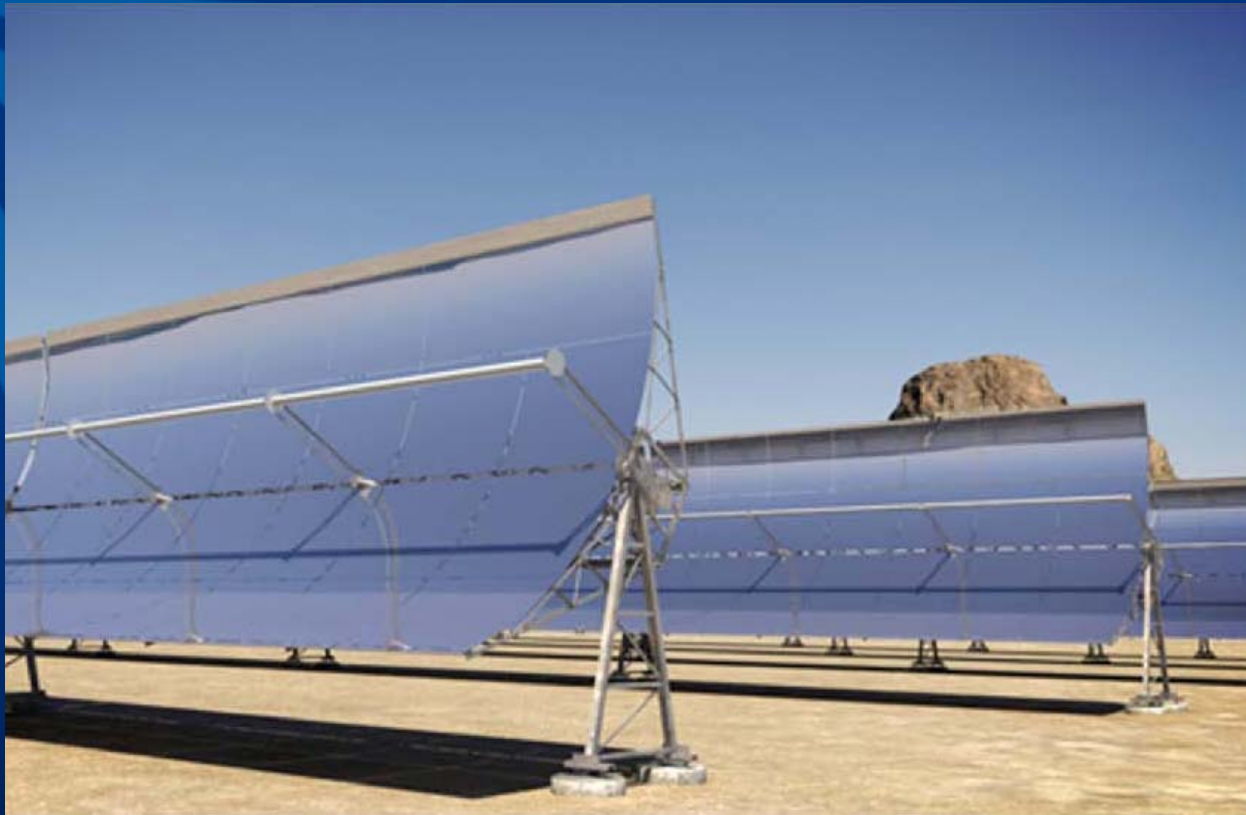
Solana Generating Station



Largest Concentrating Solar Power (CSP) project
on private land (280 MW) – Located near Gila Bend,
70 miles southwest of Phoenix

Photo courtesy of Abengoa

Solana Generating Station



Parabolic mirrors focus the sun's heat on a heat transfer (molten salt) fluid that can reach a temperature of 735 degrees Fahrenheit.

Photo courtesy of Abengoa

Thermal Storage Tanks



Photo courtesy of Abengoa

Solana Generating Station



Photo courtesy of Abengoa

- **Construction jobs: 1500-1700**
- **Skilled positions: 85-100**
- **Expected to be completed in 2013**
- **Will produce enough energy to serve 70,000 customers**

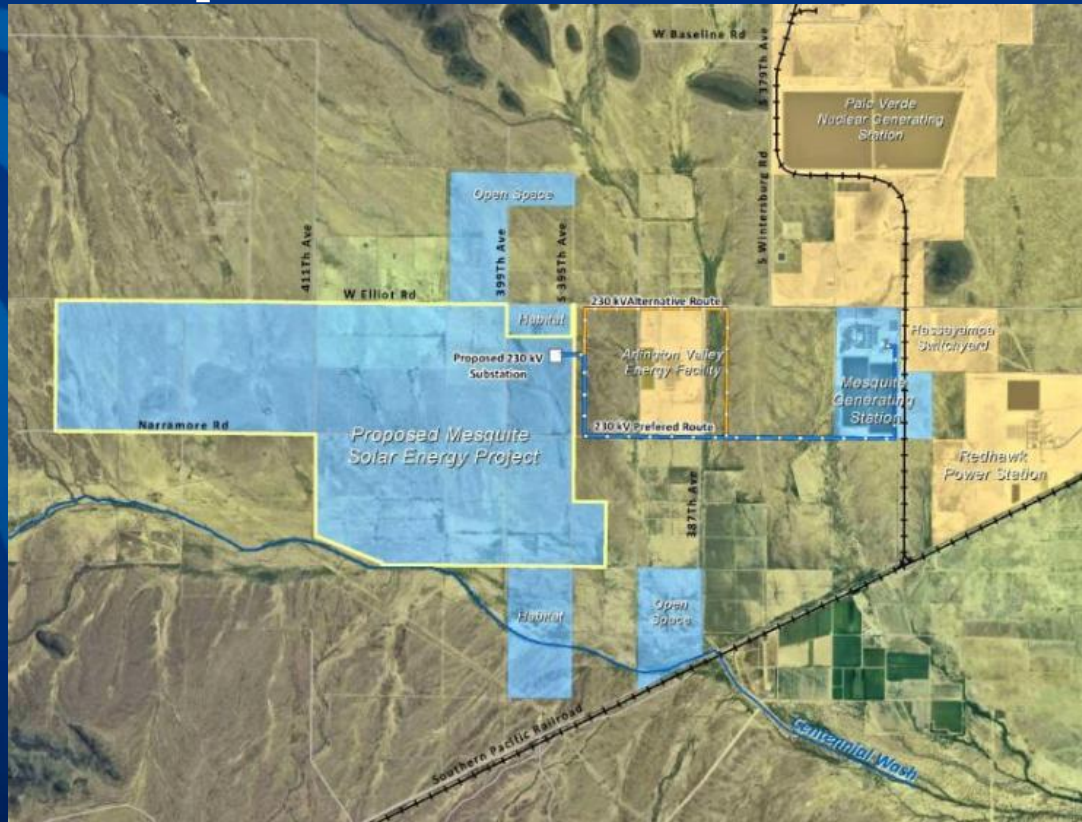
Agua Caliente Generating Station



**World's largest PV project under construction (290 MW)
65 miles east of Yuma in Yuma County**

Photo courtesy of First Solar

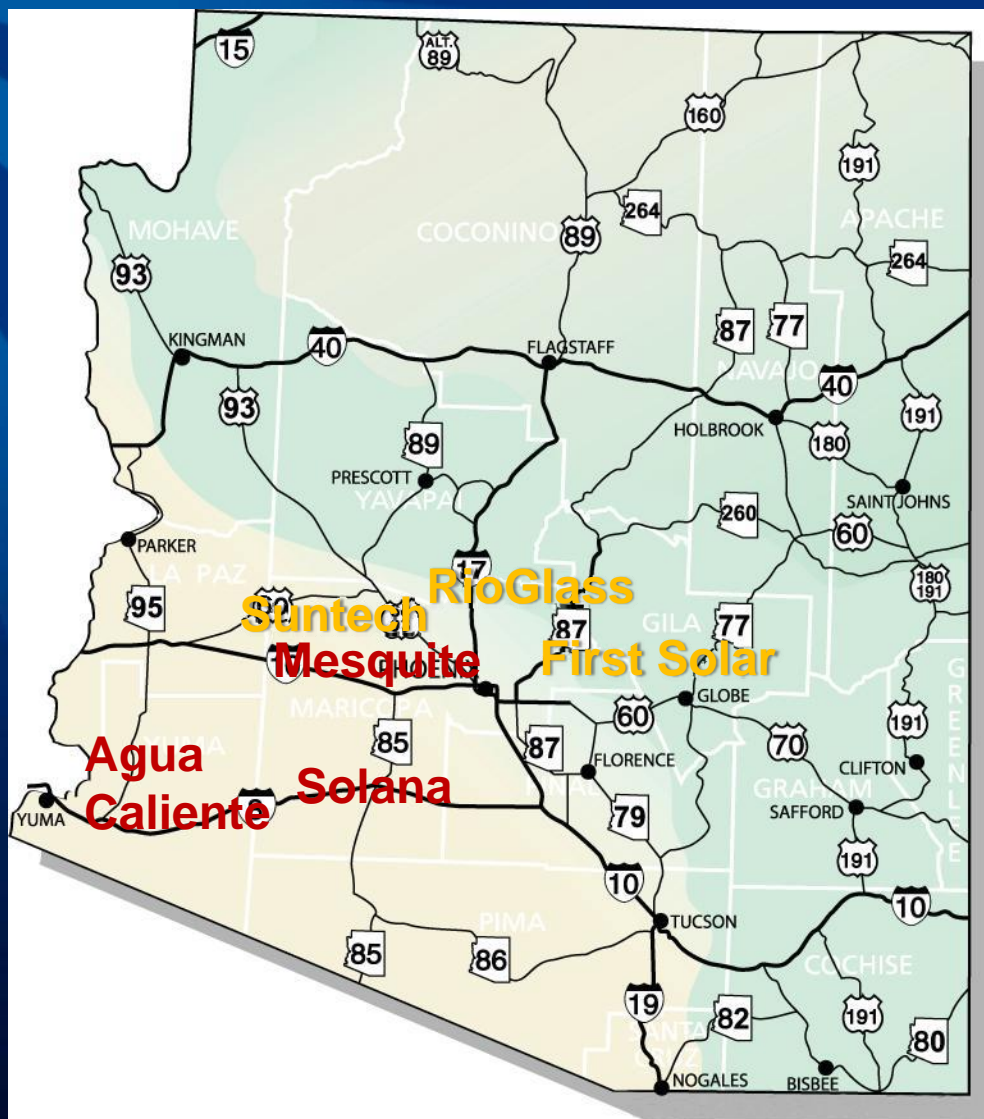
Mesquite Solar 1 – 150MW



Creating 300 jobs, Mesquite will produce enough energy for 56,000 average homes, in Maricopa County, 60 miles southwest of Phoenix

Map courtesy of Mesquite Solar 1

Arizona Solar Energy Supply Chain



It's all about Arizona





Arizona:

The Solar Capital of the World

For more information:

Leisa Brug

Energy Policy Advisor to Governor Brewer
Director Governor's Office of Energy Policy

(602) 771-1244
LBrug@az.gov